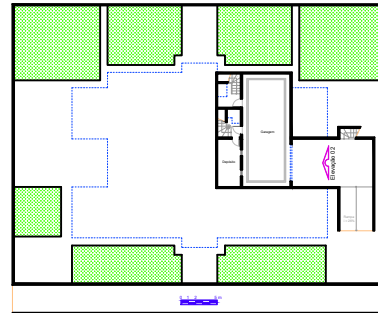
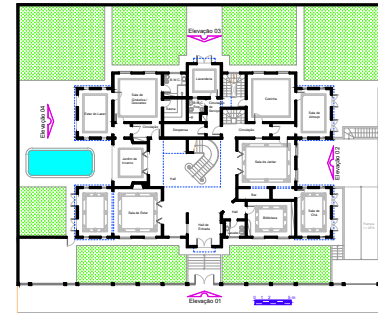


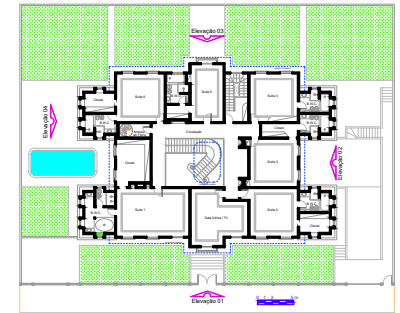
Implantação e Cobertura



Subsolo  
A = 100,44 m<sup>2</sup>



Térreo  
A = 432,75 m<sup>2</sup>

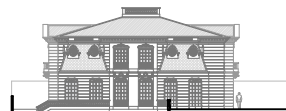


Superior  
A = 398,75 m<sup>2</sup>

Área Total = 931,94 m<sup>2</sup>



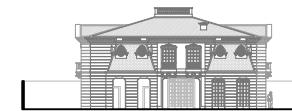
Elevação 01



Elevação 02



Elevação 03



Elevação 04